

CEDAR RAPIDS, IOWA



J.E. ADAMS INDUSTRIES
OWNERS MANUAL

MODEL 8900 SERIES

- PAGE 2 PRODUCT INFORMATION
- PAGE 3 SPECIFICATIONS
- PAGE 3 IMPORTANT SAFETY INFORMATION
- PAGES 4-5 INSTALLATION
- PAGES 5-6 PROGRAMMING
- PAGE 6 OPERATING
- PAGE 6 MAINTENANCE
- PAGES 7-8 TROUBLESHOOTING
- PAGES 9-11 PARTS LIST
- PAGE 12 WIRE DIAGRAMS

PRODUCT INFORMATION

Please take a moment to fill out the information below in order to aid us with any future sales or service inquiries. Model number and serial number information can be found on the serial tag located inside the control box and/or on the lower exterior of the can. Key number can be found on the tag that comes attached to the keys. There may be more than one key number depending on unit.

Please keep this information with your records.

MODEL#:_____

SERIAL#:_____

KEY NUMBER(S):_____

DATE PURCHASED:_____

DISTRIBUTOR:_____

**J.E. Adams Industries
1025 63rd Ave. S.W.
Cedar Rapids, IA 52404
1-800-553-8861
www.jeadams.com**

SPECIFICATIONS:

Unit specifications:

Voltage: 110v, 60Hz
Amperage: (1)20 amp service is required for this unit
Weight: 195 lbs with pallet attached

Vac specifications:

Motors: (2) Ametek 110v motors
Fuses: (2) 10 amp fuses
Relays: (1) DPDT 30 amp rating per contact

Fragrance Specifications:

Compressor: (1) Thomas 110v, 1/12th hp compressor
Pumps: (3) Thomas peristaltic Pumps, 12VDC
Relays: (1) DPDT 20 amp rating per contact

NOTE: "UNIT INTENDED FOR COMMERCIAL USE ONLY"

IMPORTANT SAFETY INSTRUCTIONS

When using an electrical appliance, basic precautions should always be followed, including the following:

READ ALL INSTRUCTIONS BEFORE USING (THIS APPLIANCE)

WARNING – To reduce the risk of fire, electric shock, or injury:

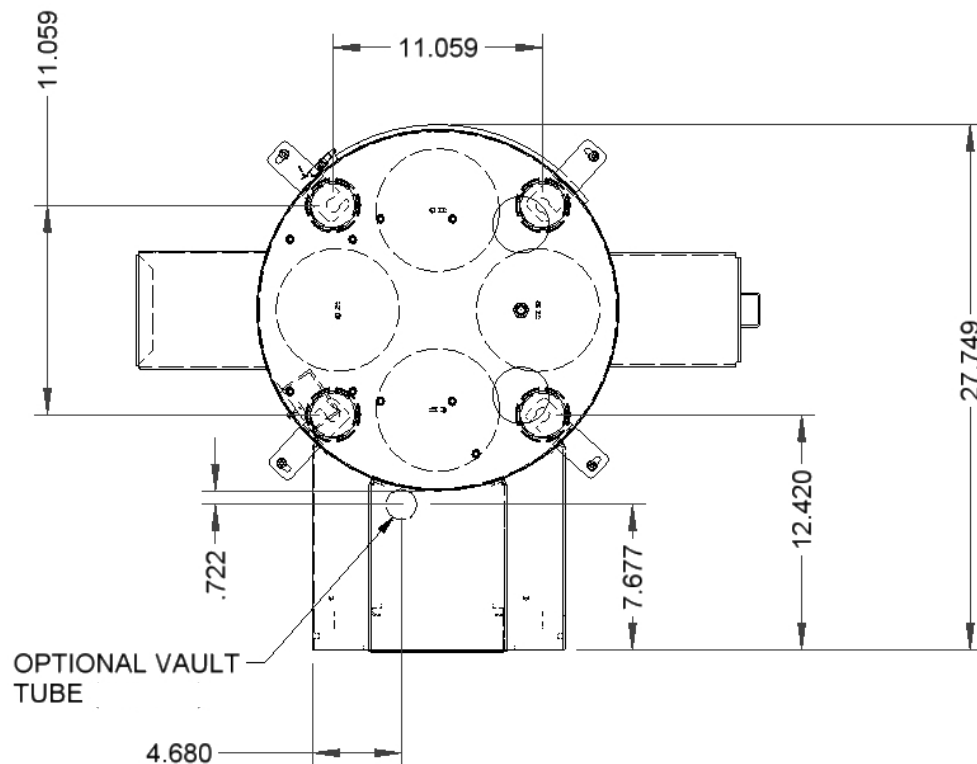
- Do not use on wet surfaces.
- Use only as described in manual. Use only manufactures recommended attachments.
- Do not allow to be used as a toy. Close attention is necessary when used by or near children.
- Do not put any object into openings. Do not use with any opening blocked; keep free of dust, lint, hair and anything that may reduce air flow.
- Keep hair, loose clothing, fingers, and all parts of body away from openings and moving parts.
- Do not use to pick up flammable or combustible liquids, such as gasoline, or use in areas where they may be present.
- "Do not pick up anything that is burning or smoking, such as cigarettes, matches, or hot ashes."
- "DO not use without dust bag and/or filters in place."

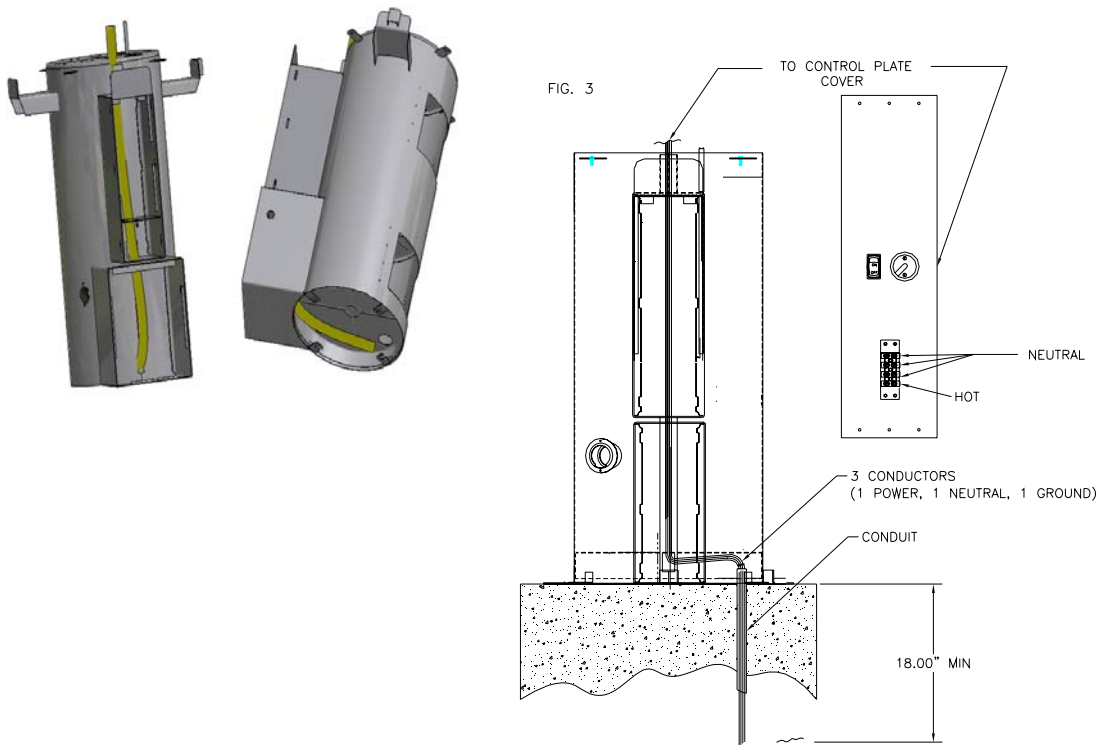
SAVE THESE INSTRUCTIONS

Installation Instructions:

- Determine location to mount unit (**"DANGER" "THIS EQUIPMENT INCORPORATES PARTS SUCH AS SWITCHES, MOTORS, OR THE LIKE THAT TEND TO PRODUCE ARCS OR SPARKS THAT CAN CAUSE AN EXPLOSION. WHEN LOCATED IN GASOLINE-DISPENSING AND SERVICE STATIONS INSTALL AND USE AT LEAST 20 FEET (6 M) HORIZONTALLY FROM THE EXTERIOR ENCLOSURE OF ANY DISPENSING PUMP AND AT LEAST 18 INCHES (450 MM) ABOVE A DRIVEWAY OR GROUND LEVEL."**)
- Run 20amp wire service to location underneath canister. Run wire to top of units as shown in fig. 3
- **Grounding Instructions:** This appliance must be connected to a grounded metal, permanent wiring system; or an equipment-grounding conductor must be run with the circuit conductors and connected to the equipment-grounding terminal or lead on the appliance.
- Mount unit to location and use fig. 1 for mount pattern
- If unit is vault ready see fig. 2 for vault tube location.

8900-110V, 8900-110VR





- Once unit has been installed use 5871B8 cap plugs supplied with unit to seal holes in canister bottom located in lower cleanout door. Then connect to power, insert shampoo and spot formula into bottom door and attach lids to appropriate bottles.
- Turn unit on and move to program instructions.

Programming Instructions:

Coin acceptor:

- No programming to acceptor needed if unit was purchased with the standard Imomex Z32 electronic acceptor (8149-92 our part number) is pre-programmed to accept US quarters, .984 tokens, US \$1 coin and 1.073 token. Acceptor is pre-programmed before it is sent to J.E. Adams.
- If different acceptor was purchased, see additional literature sent along with unit for programming info.

Bill acceptor:

- Bill acceptor comes pre programmed from J.E. Adams and should not require any changes. If additional programming is needed to acceptors please refer to additional literature sent along with this unit.

Display:

- Unit may be programmed when received depending on information given at that the time of order.
- To program follow the instructions below.

Display programming with remote:

- 1) To program, power must be turned on.
- 2) Insert plug into back of display and press the edit key on remote pad.
- 3) The timer will display "total coins". This is the amount of coins that have been put

through machine since the last time it was zeroed out. To zero, press delete key. To save, press the save key. The unit will now display "saved". This function allows you to monitor the amount of coins the machine takes.

4) Next, the timer will display "coins to start". Use the up and down arrow keys to change the amount of coins to start. Press the save key to save your input. The display will confirm this by displaying the word "saved".

5) Timer will now display "coins to start b". Follow the same procedure as step d.

6) the timer now displays "cycle time". To change this time in 10 second intervals, press the left arrow key. Then press the up and down arrow keys to change time. To change time by one second intervals, press the right arrow key. Then press the up and down arrow keys to change time.

To save the "cycle time", press the save key. The timer will now read "saved".

7) Timer now displays "cycle time b". Follow same procedure as step 6.

8) Timer now reads "last coin beep". Change reply from 10 sec to 1 min or vice versa by pressing the "n" key. To save the desired "last coin beep", press the save key.

9) The "welcome message" will now appear with the character located in the center of the board. If the character is blank, use the up and down keys. You have 36 places to put characters. To move the message left one space, press left arrow key. To insert a character, press the insert key. To delete a character, press the delete key. To save message, press the save key.

10) Now the "sales" message will appear. It also has 36 characters. Follow the same procedure as in step 9. The sales message will connect to the end of the welcome message.

11) Now the "exit message" will appear. It also has 36 characters. Follow the same procedure as step 9. Note the welcome message and sales message scroll on the display at all times. The exit message scrolls three times after the timer has timed out.

12) Disconnect remote from display. Display is now programmed and ready for use.

Operating Instructions:

- Select desired function.
- Insert coins or bills to start desired function.
- If scent is selected, it is recommended that you vacuum before applying formula.
- If other function is selected other than original selected item unit will recalculate timer based on the amount of money it takes to start the specific function.
- Once service is used, hang up hose.

Maintenance:

- Filter bags should be taken out weekly and shaken out. Also it might be a good idea to keep a new set of bags on hand so that once a month or longer you can take original bags out and wash them.
- Check vac hose for cracks on a weekly basis.
- Check scent bottles to assure that they are full.
- Clean canister with a stainless steel cleaner as needed.
- Check motor brushes approx. every 3 months for excessive wear. Motor brushes should be changed if they are shorter than ¼". ***Please disconnect power before doing this.***
- Check all scent lines and assembly for any signs of wear.
- All servicing of machine should be conducted by an authorized service representative.

Troubleshooting:

DISCONNECT POWER BEFORE SERVICING

Problem	Possible cause	Solution
Unit is not powered	Power switch under dome of unit is not in the on position	Flip switch to on
Display is not powering	Power switch under dome of unit is not in the on position Check transformer inside main power box in unit. Is there 24VAC at output terminal?	Flip switch to on Replace transformer (8131-2)
Display reads "fail"	Coin acceptor putting out continuous pulse Program in display may be lost	Press mode button on display. If fail does not go away replace coin acceptor. (8149-92) Reprogram display. If fail goes away and then comes back, replace battery in display.
Unit keeps blowing my breaker from my incoming power source	Inadequate wire size supplied to machine Wrong size breaker	Call electrician and install proper wire size for 20amp service versus length or run. Install correct breaker(only use wire size that is adequate to handle 20 amp breaker)
Fuses for vac motors keep blowing.	Inadequate wire size supplied to machine Motor brushes may be bad or too short	Call electrician and install proper wire size for 20amp service versus length or run. Replace motor brushes (8055BR)
Vac motors will not shut off after display has timed out	Check contactor for vac located on upper control plate control	If contact is stuck open replace with new contactor. (5967D001)
Scent keeps running after display has timed out	Check surface mount relay labeled scent for contact stuck.	If contact is stuck open replace with new relay(8768)
Unit has lost suction	Vac hose clogged Filter bags need cleaned	Clean out debris from vac hose Clean out filter bags or replace (8076)

	Vac hose is damaged	Replace vac hose (2036)
	Cleanout door gaskets torn or worn	Replace gaskets (8159)
Unit has shut down For no apparent reason	This unit has a reset thermal limiter in the compressor. Unit may have shut down due to excessive heat	Turn off power to the machine and wait for a period of 5 minutes. Reapply power and activate machine.

PARTS LIST:

8900-110V

8900-110V

BILL OF MATERIALS				BILL OF MATERIALS			
ITEM	PART NUMBER	DESCRIPTION	QTY	ITEM	PART NUMBER	DESCRIPTION	QTY
41	8754	DECAL, GAS DISPENSING	1	1	8900W	CAN WELDMENT, SHAMPOO	1
43	8182	DECAL, WARNING DISC POWER	2	2	8104-1	SECURITY BRACKET, DOOR	2
44	3105	3/16" NYLON TUBING	45"	3	8104-2	SECURITY BRACKET, CANISTER	2
46	5943D322C	WIRE, 14G GRN/YEL	15"	4	8076	FILTER BAG	4
41	5602D1	NO. 10-24 HEX HEAD CAP SCREW	4	5	8159	DOOR GASKET	2
42	5611D2	NUT, 10-24 UNC KEPP., ZINC	4	6	8057	MOTOR GASKET	2
43	5871B8	PLUG, VAC BOTTOM 2-1/2"	4	7	5639D9	ISOLATION MNT, 30 DUR NEOPRENE, 1/4-20	4
44	8847	FLEX HEATER	1	8	8824	1/12 H.P. AIR COMPRESSOR	1
45	8848	THERMOSTAT	1	9	9500-19	COMPRESSOR BRACKET, SHAMPOO	1
46	5803D11	PUSHLOCK FITTING, 3/16 OD	1	10	5601D1	1/4-20 x 1/2 HHCS, ZINC PLATED	9
47	5639D1	RUBBER GROMMET	1	11	5603D5	1/4 Std NC Nylock Nut	7
48	8925	FLUORESCENT BULB	3	12	8055	MOTOR, AMETER, 115V	2
49	5606D7	FLAT WASHER, .160 ID X .500 OD	1	13	8051G	BRACKET, MOTOR MOUNT	1
50	8157	NUT, #6-32 KEPP NUT STAINLESS	2	14	5603D11	1/2 Std NC Nylock Nut	1
51	5627D2	Pan Head, Slotted, 6-32 x 5/8	1	15	9500-12A	ELECTRICAL BOX COVER ASSY	1
53	5614D1	SCREW, #6-32	2	16	8108	#10 x 1/2 TAP SCREW	4
54	8055LEAD	WIRE LEAD, VAC MOTOR	4	17	2036	HOSE, 2" X 15' BLACK VACUUM	1
55	B5997-001	FUSE HOLDER, 10A MAX	2	18	2056-BLACK	2" BLACK CLAW NOZZLE "ADAMS"	1
56	B5996-010	FUSE, 10AMP	2	19	2091	2" SWIVEL CUFF BLACK	1
57	5663D1	#8-32 x 1/2 PHILIPS	4	20	8615-5W	CLEANOUT DOOR WELDMENT	2
58	8638	PIN LOCK	1	21	8153-1	LATCH, CLEANOUT DOOR	4
62	5901D4	WIRE NUT, ORANGE	2	22	8204RW	WELDMENT, COIN BOX	1
64	5900D4	WIRE TERMINAL, RED	4	23	8202W	COIN BOX COVER WELDMENT	1
66	8859	SCENT, NEW CAR	1	24	8206	LOCK BAR, COIN BOX COVER	1
67	8857	SCENT, WILD CHERRY	1	25	6024	ABUS DISKUS 26/70 LOCK	1
68	8865	SCENT, VANILLA	1	26	8953	MEDECO CAM LOCK W/2 KEYS	2
69	8435-5	DECAL, FRAGRANCES	1	27	8802-1	BOTTLE CAP, DRILLED	3
75	8435-5V	DECAL, VANILLA FRAGRANCE	1	29	9500-47	STAINLESS TUBE WEIGHT	3
70	5647D2	RIVET 1/8 POP	16	30	9500-201	FACEPLATE, SHAMPOO BOX	1
71	5647D8	RIVET 3/16 POP	14	31	8957VS	COIN CHUTE, SCENT VAC	1
72	8000-25	WAGO, WALL NUT	4	33	8306	24" PLASTIC DOME	1
73	5902D7	RING TERMINAL, YELLOW	2	34	8898-1	FRAGRANCE GUN ASSY, .750 OD HOSE	1
74	5902D1	RING TERMINAL, BLUE	1	35	8843	DEBRIS FILTER	3
		PACKAGING	1	36	29000-29A-2	PUMP ASSEMBLY	1
	8605	PALET	1	37	28000-40	PLASTIC CONTAINER	3
	5600D4	CARR BOLT, 3/8-16	4	38	8900-F1	FACEPLATE ASSY, W/VALIDATOR	1
	5608D3	WASHER, 3/8	4	39	9500-11A-1	ELECTRICAL BOX ASSEMBLY	1
	B5722-002	NUT, LOCKNUT 3/8-16	4	40	8732	SERIAL TAG	1
	6082	BAG	1				

REV

NO.

DESCRIPTION

DATE

BY

THIS DOCUMENT SHALL NOT BE REPRODUCED NOR SHALL THE INFORMATION THEREIN BE USED BY OR DISCLOSED TO OTHERS EXCEPT AS AUTHORIZED BY J.E. ADAMS INDUSTRIES

ANGLE ±1.0°

DATE 2/2/2009

JOHN F.

8900-110V

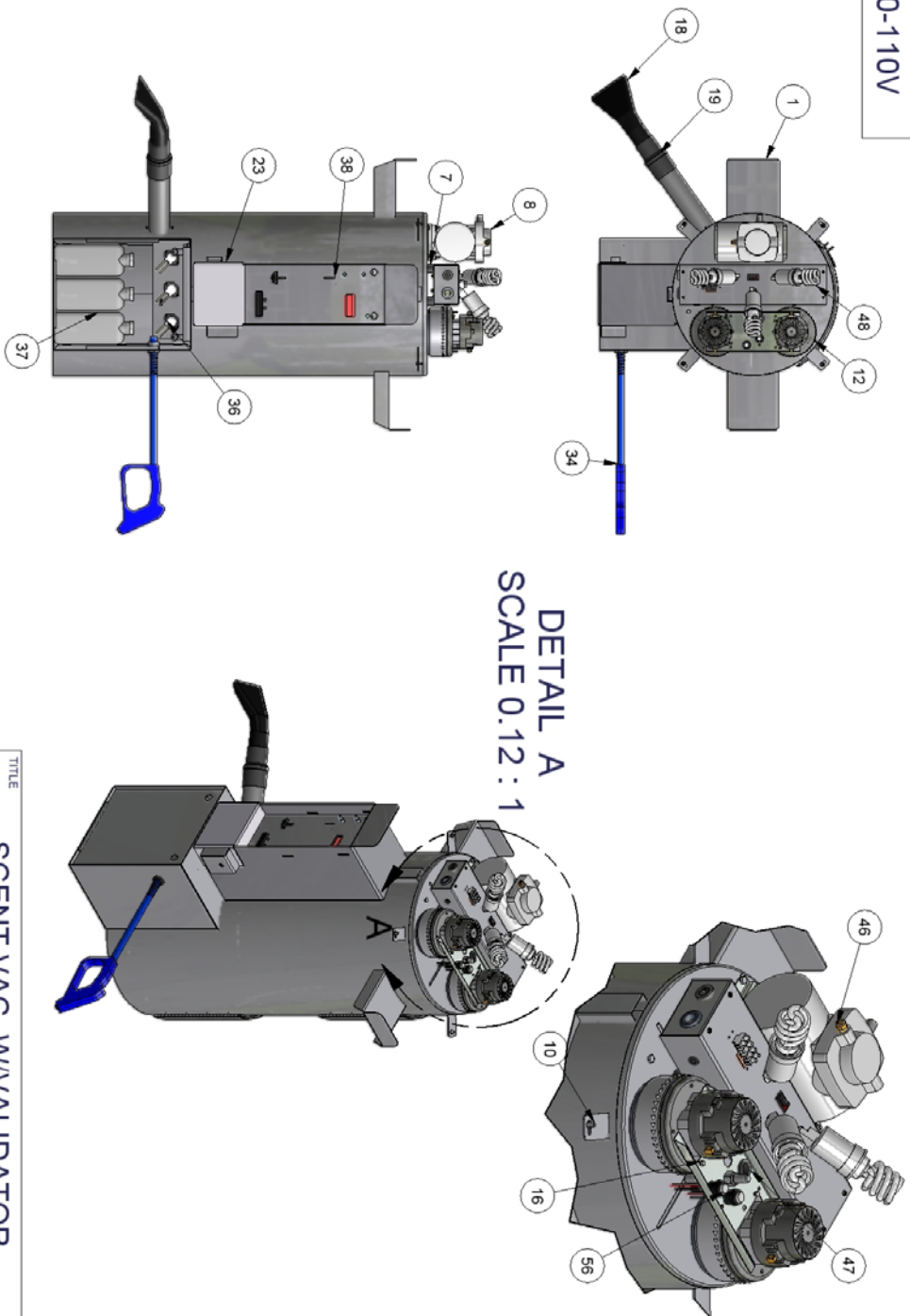
REV

CECARE RAPIDS, IOWA

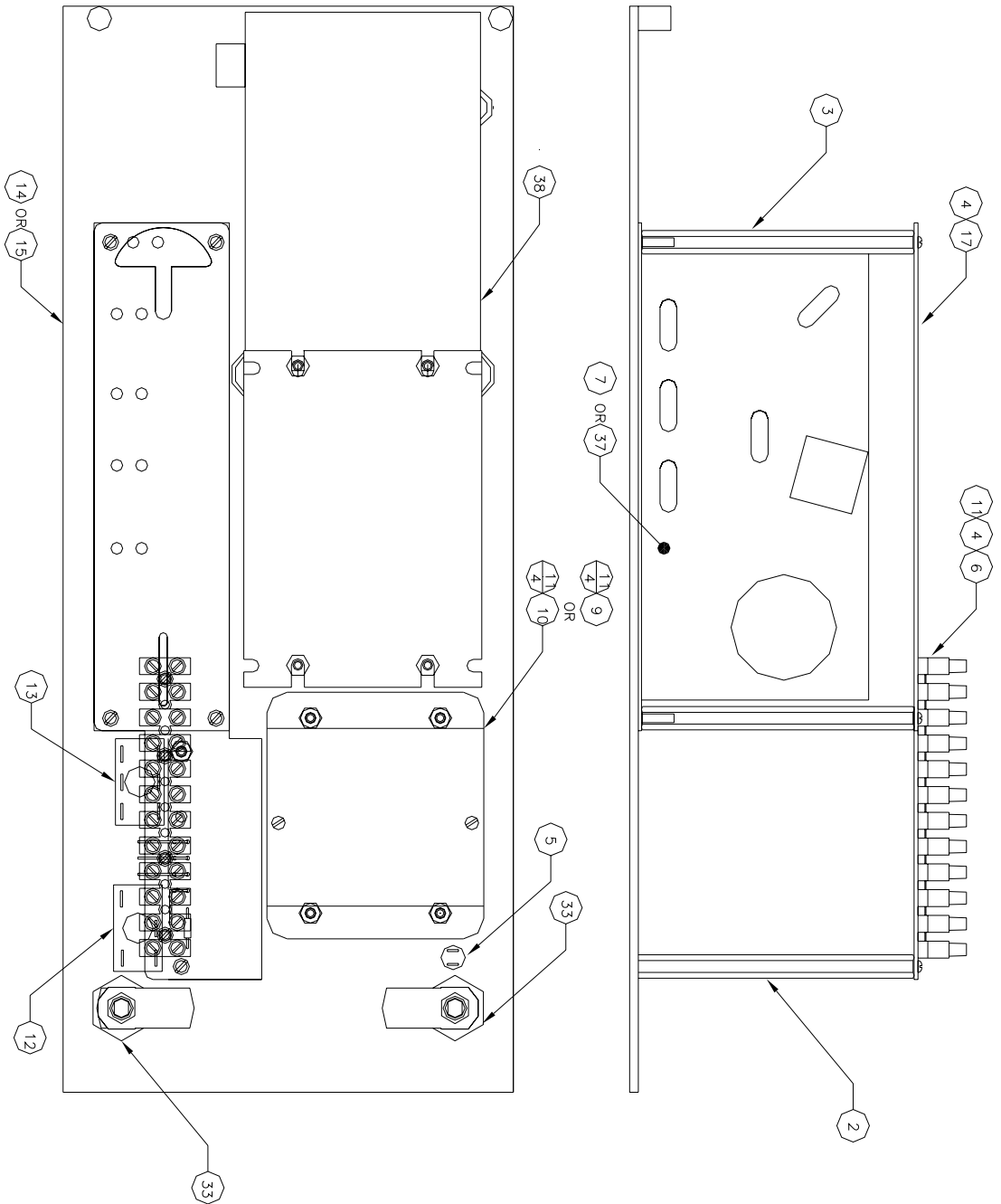
8900-110V



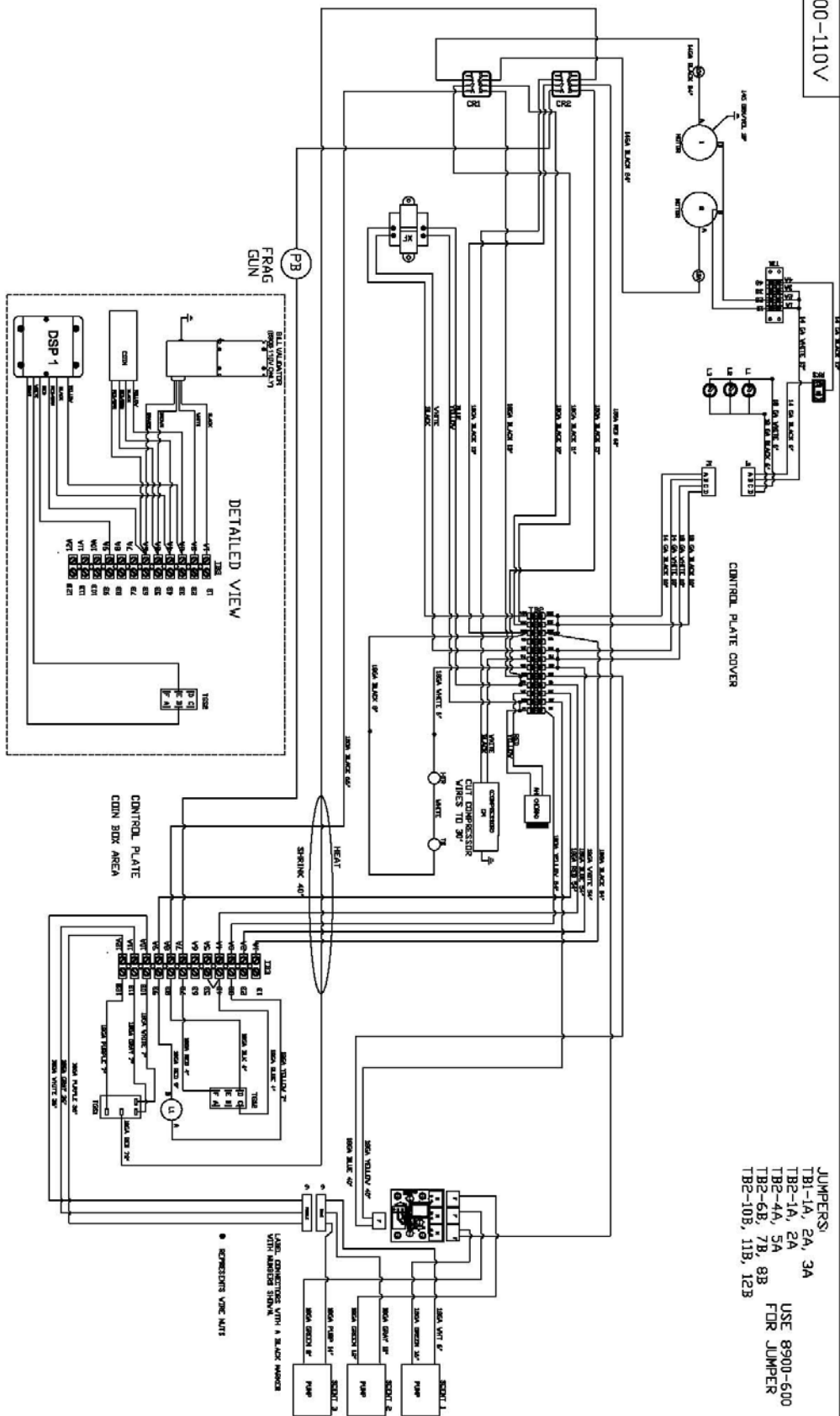
CEDAR RAPIDS, IOWA



				TITLE	
				SCENT VAC, W/VALIDATOR	
		UNSPECIFIED TOLERANCES		MATERIAL	
		1 PL ±.030		SCALE	
		2 PL ±.010		DRAWN BY JOHN F.	
		3 PL ±.003		DATE 2/2/2009	
		ANGLE ±1.0°		PART NO. 8900-110V	
REV		NO.		DESCRIPTION	
THIS DOCUMENT SHALL NOT BE REPRODUCED NOR SHALL THE INFORMATION THEREIN BE USED BY OR DISCLOSED TO OTHERS EXCEPT AS AUTHORIZED BY J.E. ADAMS INDUSTRIES					



BILL OF MATERIALS			
ITEM #	PART NUMBERS	DESCRIPTION	
6	6	500005	STANDOFF
10	10	5627D2	#6-32x5/8 SCREW
1	1	5913D8	LED, GREEN
1	1	5944D003	TERMINAL STRIP, 12 POS
1	7	8107-1	SECURE COIN, EURO
1	1	8131-8	DISPLAY, LTT800FH
1	10	8131-13	DISPLAY, EURO-POUND
8	12	115603D18	#6-32 NYLOC NUT
1	1	128849D001	SP3T SWITCH
1	1	138849D002	DPDT SWITCH
1	1	148900-7W	FACEPLATE, VALIDATOR
1	1	158900-13W	FACEPLATE, NO VALIDATOR
1	1	178900-82	TERMINAL BRACKET
2	2	338953	LOCK W/KEYS
1	1	378149-92	MONEX ELECTROIC ACCEPT
1	1	388130-6	MARS VALIDATOR
1	1	399500-56	WIRE CONNECTOR ASSEMBLY



REV	NO.	DESCRIPTION	DATE	BY
<p>THIS DOCUMENT SHALL NOT BE REPRODUCED NOR SHALL THE INFORMATION THEREIN BE USED BY OR DISCLOSED TO OTHERS EXCEPT AS AUTHORIZED BY J.E. ADAMS INDUSTRIES</p>				
<p>PART NO. S8900-110V</p>				
 <p>GEORGE RADIOS, ROMA</p>				
<p>UNSPRIFIED TOLERANCES</p> <p>1 PL. 0.030 2 PL. 0.010 3 PL. 0.003 ANGLE 11.0°</p>				
<p>TITLE</p> <p>SCENT VAC DIAGRAM - VALIDATOR</p>				
DATE	CHK	TIME	DATE	TIME
5-04	5-04	-	-	-
REVISION	NO.	DATE	TIME	REVISION
-	S8900-110V	-	-	A